



MAX PROPERTIES PVT.LTD.
BUILDING TRUST... PROMOTING HAPPINESS...



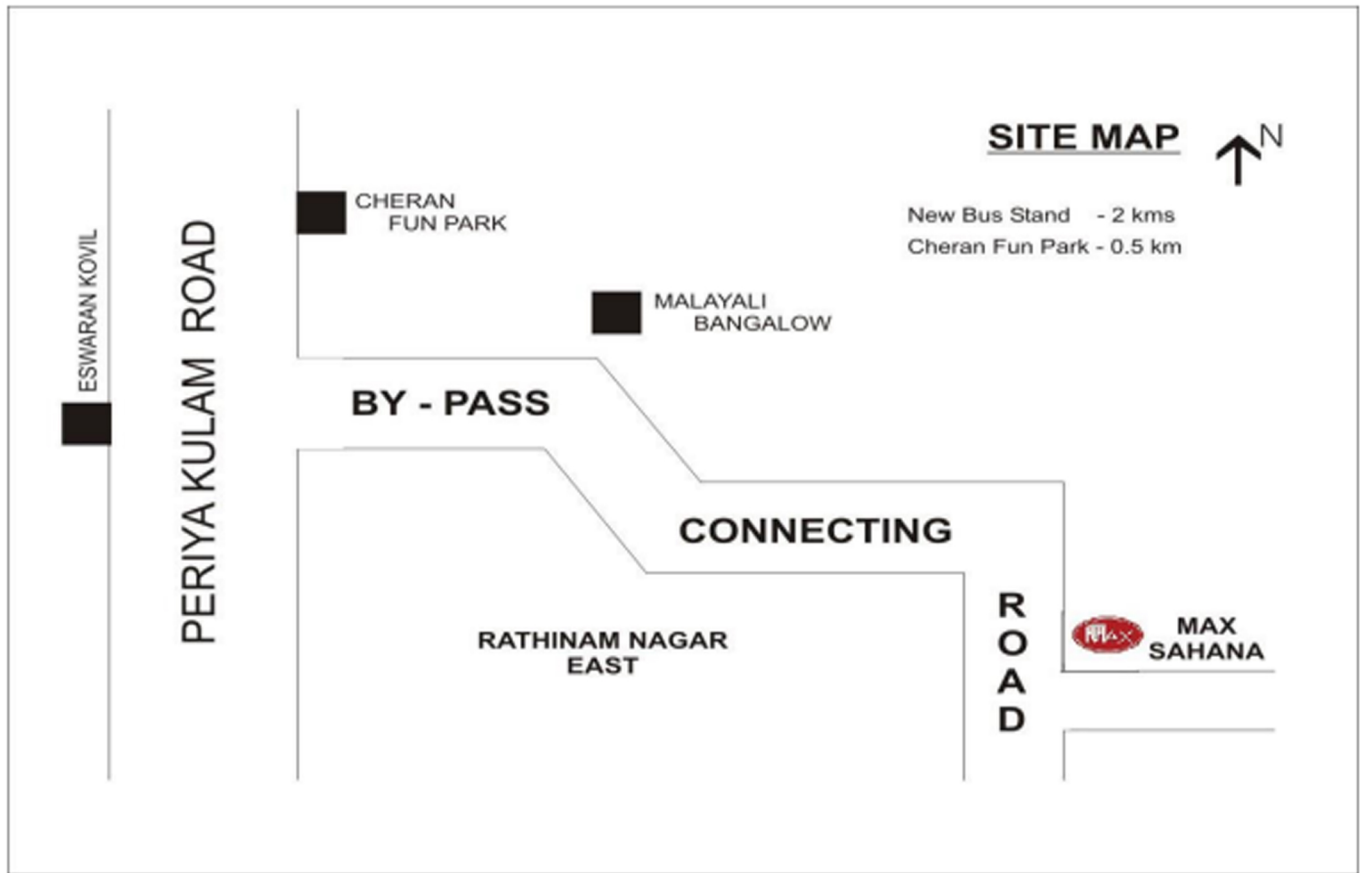
MAX Sahana

Near Rathinam Nagar, Periyakulam Road, Theni - 31.



Delivering excellence in Madurai City with the combined experience of over 70 years. Max Properties helps you take your dreams to reality. Have Completed several projects, the company has established in Tier 2 & 3 Cities for Government & Private clients as well. At Max, all our endeavors revolve around just one entity – our customers. Their need, dreams and aspirations are pivotal to our decisions. Building Dreams & Delivering excellence for many years while the Provident brand is positioned in the premium affordable segment. Meeting the aspiration of every family by offering quality homes is the Mission of Max. A future wherein our brand symbolizes unique landmarks and superior community living of the highest standards of quality and customer delight.

ROUTE MAP



LOCATION ADVANTAGES

- Near by Transports

- Rathinam Nagar Bus Stop - 3 mins
- Theni New Bus Stand - 9mins
- Theni Railway Station - 11mins

- Near by supermarkets

- Akash Super Market - 2 mins

- Near by Hospital

- Theni Government Hospital - 15 mins
- Nalam Multi Speciality Hospital - 3 mins

- Near by Institutions

- Paalam Matriculation School - 3mins
- Nadar Saraswathi College of Arts and Science - 9mins
- Theni Government Medical College - 15mins

- Other services

- Suzuki Showroom - 2mins
- Sundaram Mahal - 2mins
- TVS Shri Murugesan Motors - 3mins

TYPICAL FLOOR PLAN

A- Block



MAX PROPERTIES PVT.LTD.
BUILDING TRUST... PROMOTING HAPPINESS...



INDIVIDUAL UNIT FLOOR PLAN

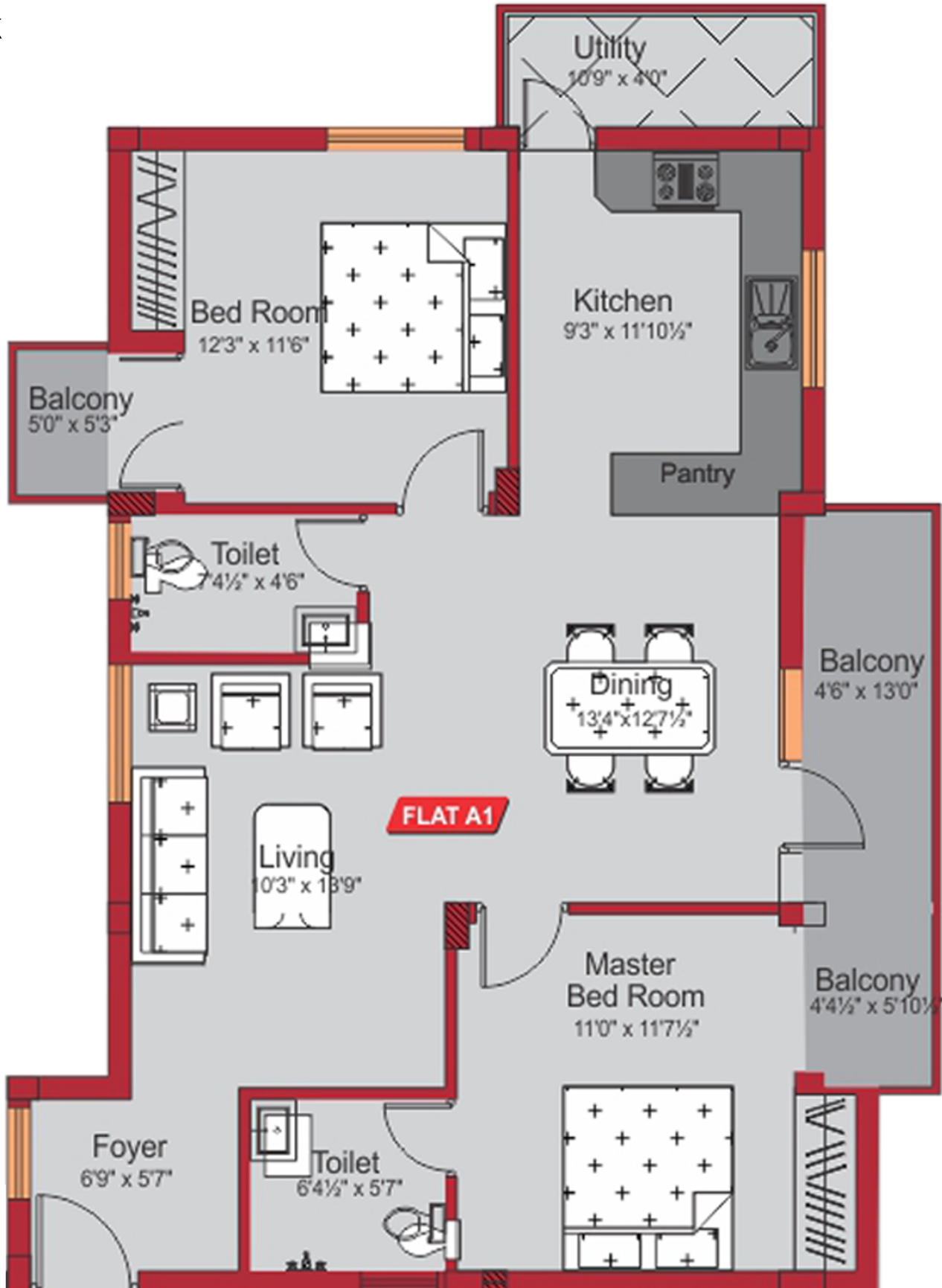


MAX PROPERTIES PVT.LTD.
BUILDING TRUST... PROMOTING HAPPINESS...

I & II FLOOR - UNIT - A1

SUPER BUILTUP AREA - 1221 SQ.FT UDS - 549.45 SQ.FT

2BHK



INDIVIDUAL UNIT FLOOR PLAN

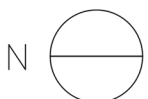
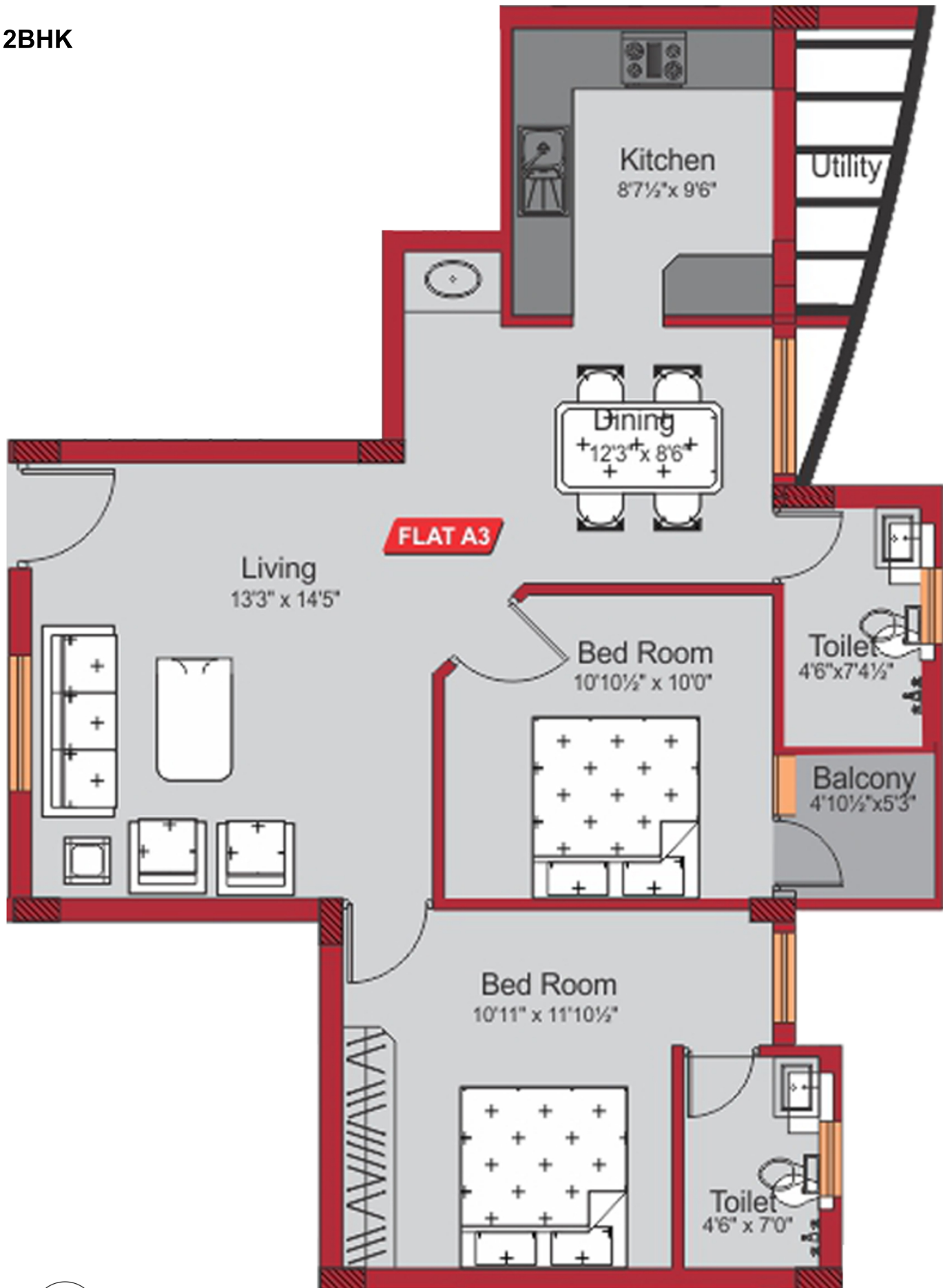


MAX PROPERTIES PVT.LTD.
BUILDING TRUST... PROMOTING HAPPINESS...

I & III FLOOR - UNIT - A3

SUPER BUILTUP AREA - 974 SQ.FT UDS - 438.3 SQ.FT

2BHK



I V FLOOR - UNIT - A4

SUPER BUILTUP AREA - 1280 SQ.FT UDS - 576 SQ.FT

3BHK



TYPICAL FLOOR PLAN

B - Block



III & IV FLOOR - UNIT - B1

SUPER BUILTUP AREA - 1685 SQ.FT UDS - 758.25 SQ.FT

3BHK

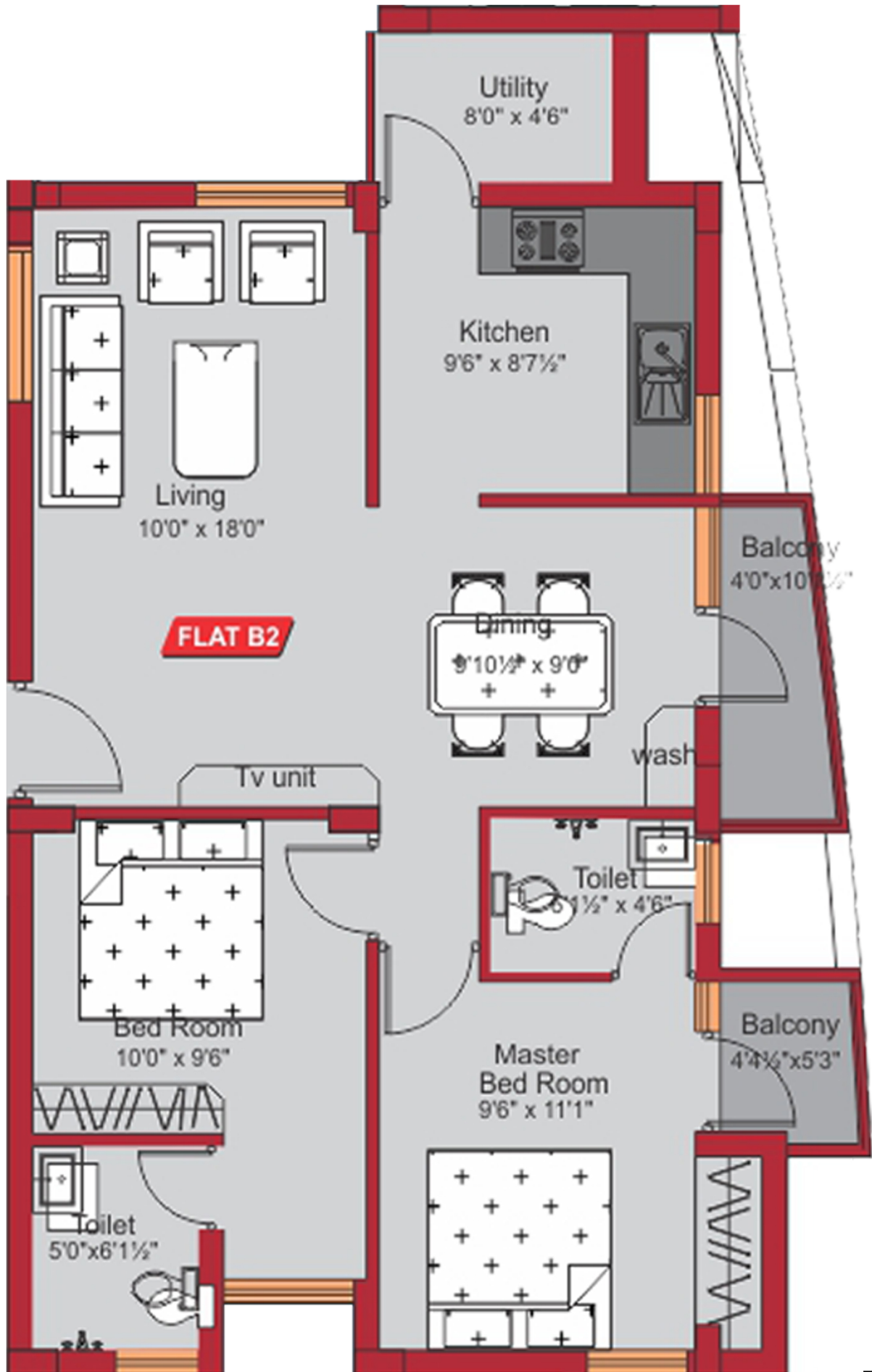


IV FLOOR - UNIT - B2

SUPER BUILTUP AREA - 1023 SQ.FT

UDS - 460.35 SQ.FT

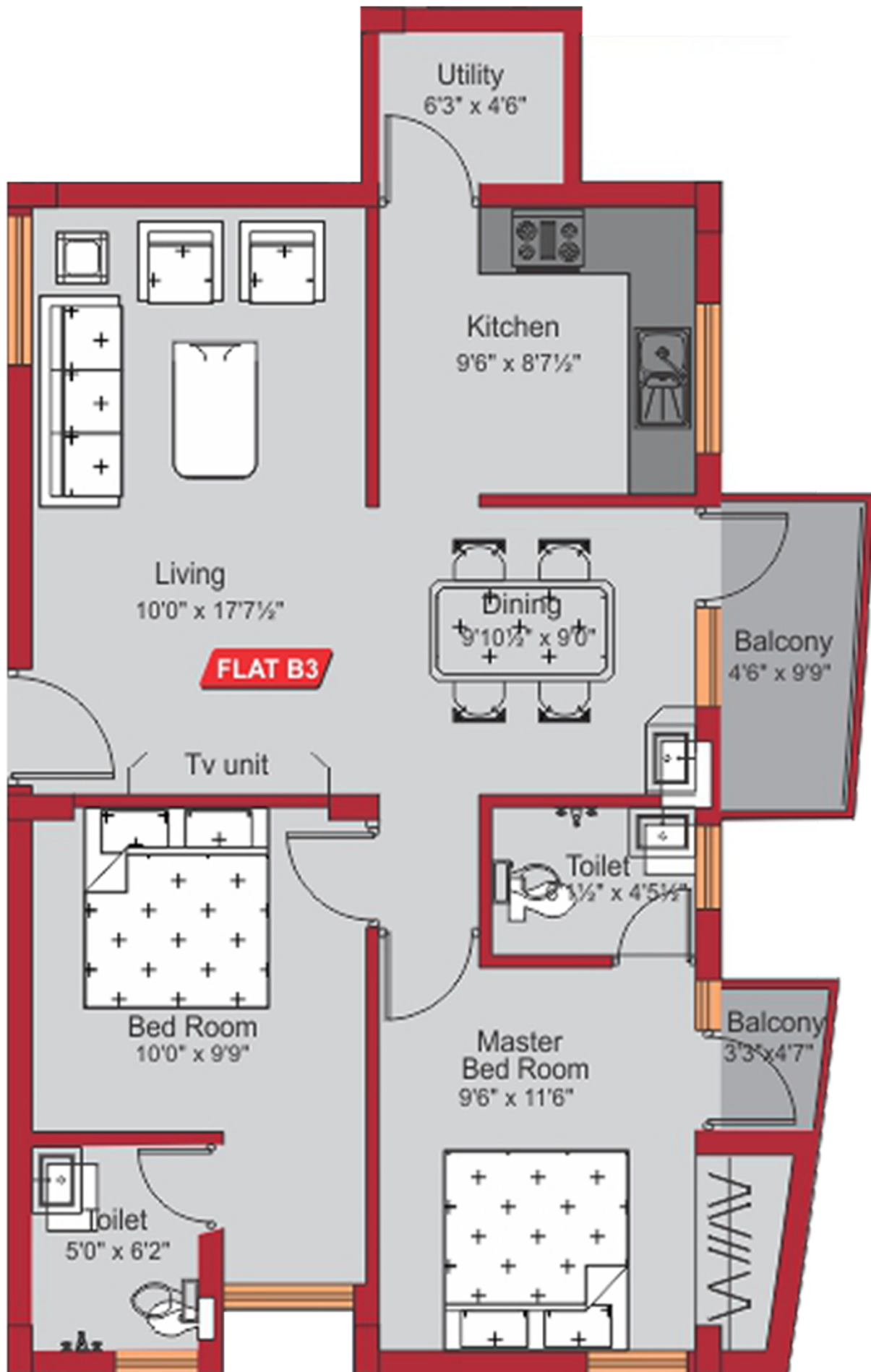
2BHK



III FLOOR - UNIT - B3

SUPER BUILTUP AREA - 1018 SQ.FT UDS - 458.1 SQ.FT

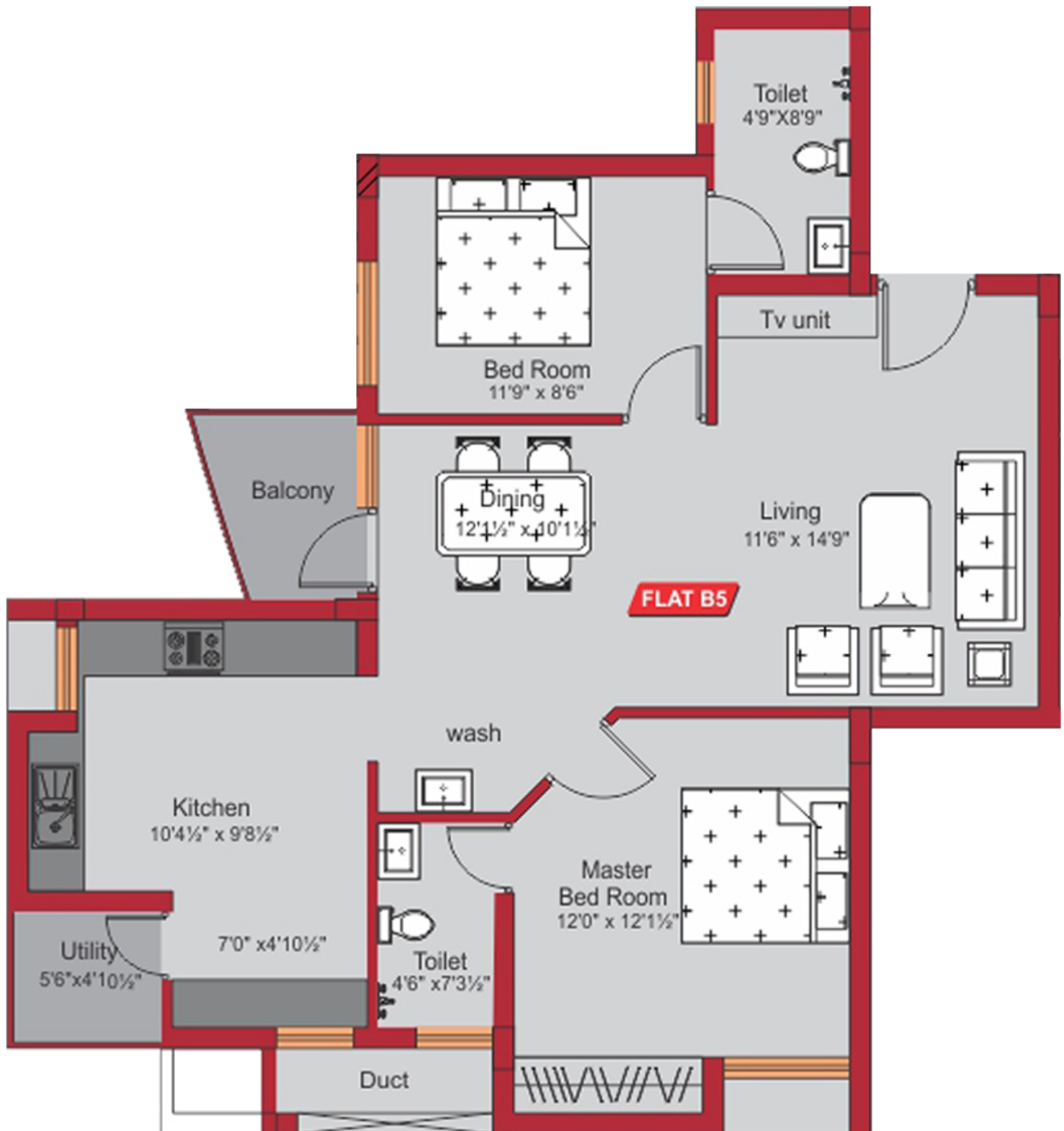
2BHK



IV FLOOR - UNIT - B5

SUPER BUILTUP AREA - 1146 SQ.FT UDS - 515.7 SQ.FT

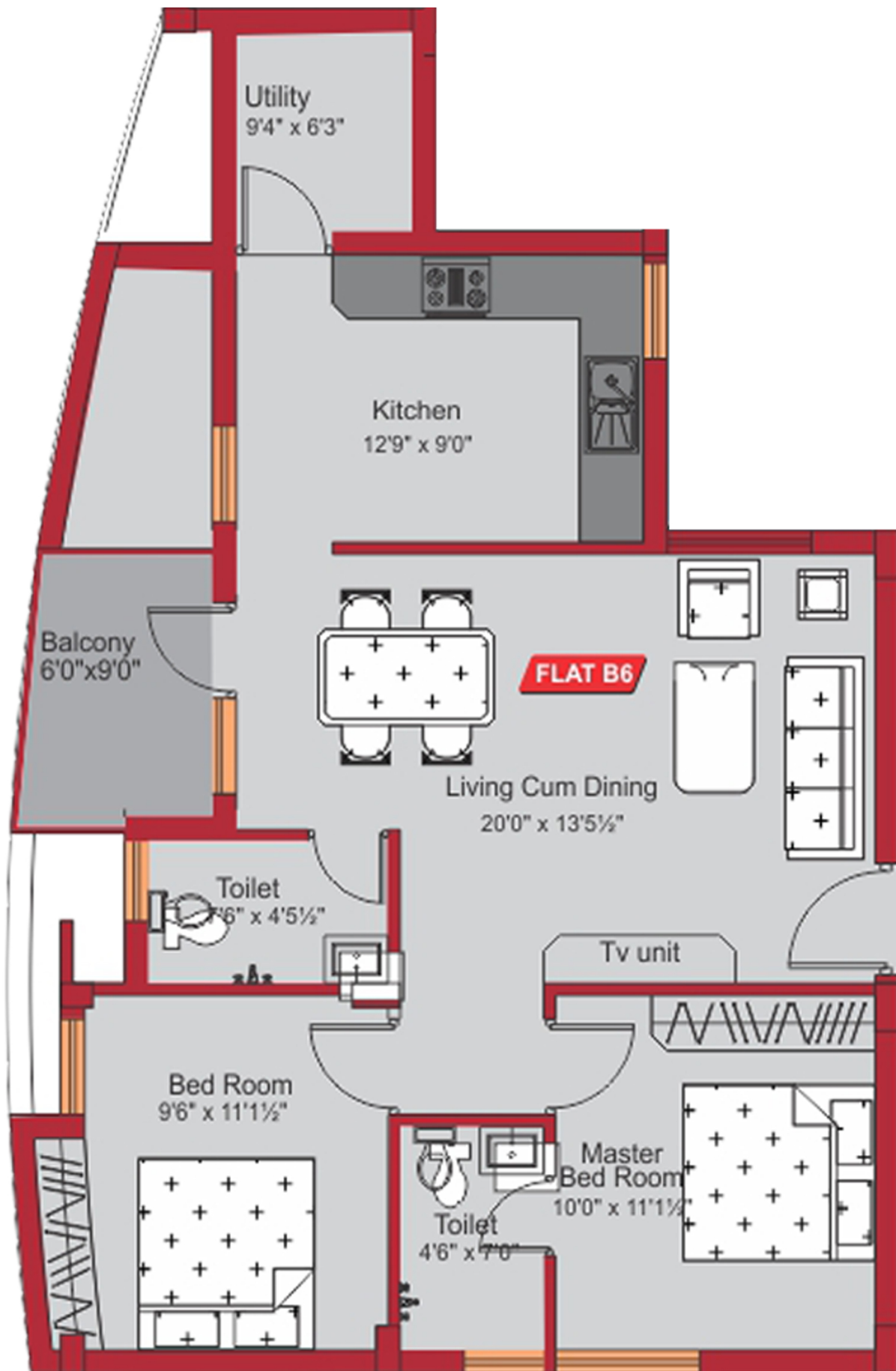
2BHK



I FLOOR - UNIT - B6

SUPER BUILTUP AREA - 1067 SQ.FT UDS - 480.15 SQ.FT

2BHK





Specifications

RCC Framed Structure

Wall finishes



- Interior** : Smooth finish full putty with durable plastic emulsion point.
- Exterior** : Outer wall with premium quality exterior emulsion paint.
- Kitchen & Bathroom** : Ceramic tiles for 2 ft and 7 ft height respectively.

Floor finishes



- Common areas** : Ceramic tiles.
- Living, Dining & Bedroom** : Vitrified tiles with skirting.
- Kitchen, Balcony & Bathroom** : Non-Slippery vitrified tiles.



Windows

- Bedroom & Kitchen** : Wooden frames with glass panels.
- Bathroom** : Fixed louvers.



Doors

- Main door** : Teak wood frame with factory made design door.
- Bedroom** : Factory made design doors with seasoned countrywood frames.
- Bathroom** : Water resistant flush doors with seasoned country wood frames.



Fittings

- Kitchen** : Stainless steel sink and tap with polished granite counter top.
- Bathroom** : Water closet, shower rose with hot and cold mixer and wash basin.
- Electrical** : Modular switches and M.C.B. Provision for Aircondition in all bedrooms. Provision for UPS.
- Cupboards** : Elegantly finished closed type showcase, wardrobes and lofts in bedrooms and kitchen cupboards.

Project amenities

Other provisions



Covered car parking



Intercom facility



Rainwater harvesting



Multipurpose hall



Telephone



Cable TV



Surveillance camera with internet security system.



Power backup for Kone automatic lift & common area.



Children play area with equipment.



Gym



Broadband(Wifi)